



# THE ART OF ALFRESCO

EMBRACE EUROPEAN QUALITY + PASSION





Euro Alfresco designs have various artistic specifications and features that are beneficial to our customers. Our appliances are pre-designed for you, a complete joinery and appliance package is usually made to avoid extra micro-management of cabinet makers to suit your exact specifications. Our products are market differentiated, as we design products different from competitors but focus on remaining relevant to the latest industry standards and on trends outdoor kitchen designs. Our finishing is premium having the market leading moisture resistant joinery materials that ensure our products last for a long time.

Our wide range of personalised options gives customer easy task in selection. Selected options can be customised further to fit exact specifications of the client. The products are manufactured in Australia with a combination of precise machines, overseas manufacturers, quality materials, and expertise to meet a desired high standard quality for Alfresco outdoor solutions, to our customers' homes. In addition to all these exciting features, there is a Euro Pronto service which intends to care for our clients after sale service and support.

Enjoy and welcome to the Art that is our Euro Alfresco.

Mario Boffa  
Managing Director,  
Eurostyle Group



# THE ART OF ALFRESCO

**Your One Stop Euro Alfresco Solution**  
Embrace your alfresco outdoor kitchen with elegance and ease

## OUR KEY FEATURES:

COMPLETE JOINERY  
+ APPLIANCE  
PACKAGE

PREMIUM  
LAMINATES, STONE  
+ APPLIANCES

AUSTRALIAN MADE\*  
AND DESIGNED  
#SUPPORTLOCAL

10 COMPACT  
LAMINATES AND  
4 STONE CHOICES

PICK UP, DELIVERY  
& ASSEMBLY  
OPTIONS

PRONTO SUPPORT  
AT YOUR SERVICE  
1800 440 335

## YOUR PRE-DESIGNED KITCHEN OPTIONS:

PICCOLO  
2.36  
METRES



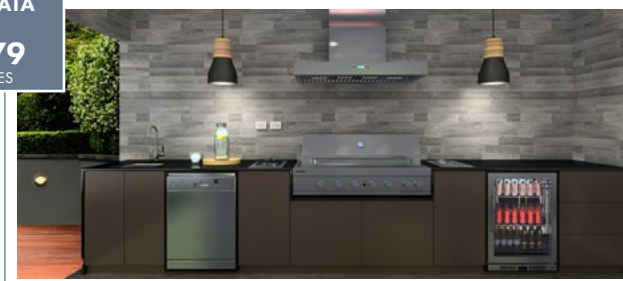
FRESCA  
4.19  
METRES



AMICI  
2.66  
METRES



SERATA  
4.79  
METRES



VIVA  
3.52  
METRES



LA MODA  
5.09  
METRES



# PERSONALISED MODULAR OUTDOOR ALFRESCO KITCHEN FOR YOU

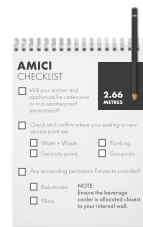
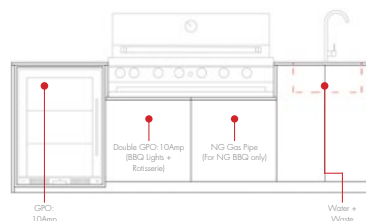
Simple Steps In Embracing A Piece Of Art  
That Is Your Alfresco Kitchen

## STEP 1

PLAN,  
MEASURE &  
SELECT

### YOUR QUICK CHECKLIST GUIDE

We've provided you with a quick checklist guide so you know how to plan and measure your alfresco area and allocate for your service requirements.



## STEP 2

SELECT  
CABINETRY  
COLOUR

### YOUR CHOICE OF COLOURED CABINETRY

Compact Laminate features + on trend colour selections for kitchen doors and kickers

Laminex®



## STEP 3

CHOOSE  
STONE  
COLOUR

### YOUR CHOICE OF STONE BENCHTOPS

Choose from our crafted selection of quality stone colours to suit your cabinetry.

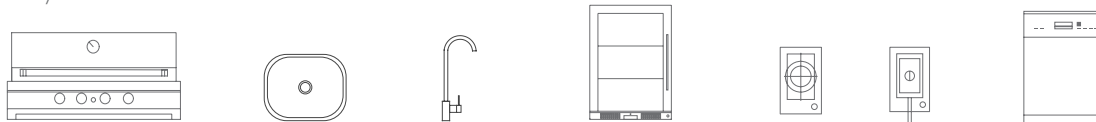


## STEP 4

CONFIRM  
YOUR  
APPLIANCES

### CHECK YOUR APPLIANCES

We have offered a specialised range of alfresco appliances and accessories to ensure the perfect fit for your alfresco kitchen.



## STEP 5

SELECT YOUR  
DELIVERY  
OPTION

### CONFIRM YOUR DELIVERY INSTRUCTIONS



PICKUP

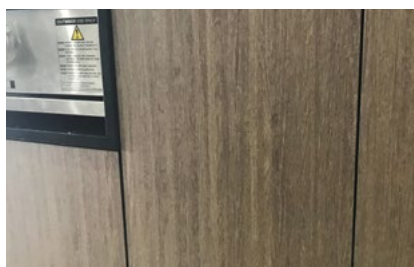


HOME  
DELIVERY\*



HOME  
DELIVERY +  
ASSEMBLY\*

## CABINETRY



### Base Carcass Units:

- + All carcass units are made from 16mm V-Lite PVC material with extreme water resistance.
- + Individually boxed including assembly instructions and joinery hardware (screws, adjustable legs, push door openers, concealed door hinges and soft close drawer runners).
- + Carcass height including adjustable legs 930mm (BBQ Unit 655mm).
- + Total joinery height including 20mm Stone 950mm (BBQ Unit 675mm).
- + Carcass depths without bench-top 560mm (700mm with bench-top) allows for services void.

### Laminex



### Doors + Drawers + Infills + Panels + Kickers:

- + All doors, drawers, infills, panels and kickers are made from 13mm Multi-purpose Compact Laminate.
- + Doors + Panels are available with or without 6mm line grooves.
- + Individually boxed for protection in transit.
- + Pre-drilled hinge holes/drawer panel mounts for easy assembly and universal left or right door selection for single door units.
- + Left & right door selection for single door units.

## STONE BENCHTOPS



- + 20mm engineered stone bench-tops with polished edges all round for reversibility.
- + Cutouts included to suit sink, tap and dominos.
- + Option for LHS/RHS sink and fridge layouts.

## WARRANTIES



Cabinetry &  
Stone Benchtops



Appliances

### Warranty Exclusions:

- + Installations in direct sunlight outside the covered alfresco main roof line area with no backing wall structure.
- + Installations in commercial structures or unoccupied structures both commercial and residential and installations moved from their original installation location both commercial and residential.
- + Failure to follow any procedures recommended by EURO ALFRESCO at the time of assembly and installation; or
- + Transport and handling, physical abuse, misuse, accidents, exposure to excessive heat, exposure to excessive moisture, the use of solvents or inappropriate cleaning products/materials, exposure to chemical products, improper maintenance, normal 'wear and tear', scratches, scuffs, burns, stains, wipe marks on darker colour surfaces; or
- + Faulty workmanship by any person other than approved EURO ALFRESCO assembly team; or
- + Where the defect has been disclosed as a feature or limitation of the EURO ALFRESCO product in any literature published by EURO ALFRESCO

## TERMS & CONDITIONS

### Terms & Conditions:

- + Each EURO ALFRESCO stockist, distributor, retailer or reseller is operated independently of the EUROSTYLE GROUP.
- + The goods described in this brochure may not be on display or available at each EURO ALFRESCO stockist, distributor, retailer or reseller. For your nearest stockist go to [www.euroappliances.com.au](http://www.euroappliances.com.au)
- + Accessories shown are not included unless otherwise stated.
- + The "EURO ALFRESCO" & "EURO APPLIANCES" logos are registered and unregistered trademarks of EUROSTYLE GROUP Pty Limited, and are used under a limited license/agreement by each stockist, distributor, retailer or reseller.
- + At the Customer's cost, the Customer must ensure a level and stable floor is available for proper assembly of the goods prior to the arrival of the assembler (if applicable).
- + At the Customer's cost, the Customer must obtain any building works approvals and permissions if required from the relevant local government authorities.
- + Delivery, assembly and installation charges are not included unless otherwise specified in the order.
- + Trades (including electrical, gas and plumbing) are not included and must be sourced by the Customer at the Customer's cost.

To view full warranty terms and conditions go to  
[www.euroappliances.com.au](http://www.euroappliances.com.au)

## DELIVERIES



### Pickup\*

Collect from your local Euro Alfresco Distributor.



### Home Delivery\*

Delivered directly to your Home.



### Home Delivery + Assembly\*

Delivered directly to your Home. Assembly in your home by our professional assembly team.



# PICCOLO

**2.36**  
METRES

- + Small + compact for hard to fit places
- + 900mm BBQ + single door beverage - requires no water services - no sink option
- \* Displayed with optional 1200mm Rangehood



## STEP 1

PLAN,  
MEASURE &  
SELECT

### DESIGN SUITABLE FOR MIRROR IMAGE

### YOUR QUICK CHECKLIST GUIDE

We've provided you with a quick checklist guide so you know to plan and measure your alfresco area and allocate for your service requirements.



### PIZZA OVEN/RANGEHOOD (OPTIONAL EXTRAS)

Love your kitchen but want a Rangehood or Pizza Oven addition? We have a large range of appliances that can make a real difference to the functionality of your new Alfresco kitchen. Check out our entire range and specifications at the back of this catalogue.



## PICCOLO CHECKLIST

**2.36**  
METRES

- ☐ Will your kitchen and appliances be undercover or in a weatherproof environment?
- ☐ Check and confirm where your existing or new service point are.
  - ☐ Water + Waste
  - ☐ Electricity points
  - ☐ Plumbing
  - ☐ Gas points
- ☐ Any surrounding permanent fixtures to consider?
  - ☐ Balustrades
  - ☐ Pillars

**NOTE:**  
Ensure the beverage cooler is allocated closest to your internal wall.

## STEP 2

### SELECT CABINETRY COLOUR

#### YOUR CHOICE OF COLOURED CABINETRY

Compact Laminex features + on trend colour selections for kitchen doors and kickers.

Laminex®



BLACK



POLAR WHITE



MOOSE



STIPPLE SEAL



PLATINUM MICRO



JERICO



OYSTER LINEA



SEASONED OAK

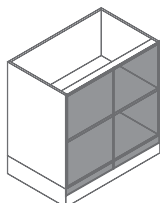


BLACKENED LINEWOOD

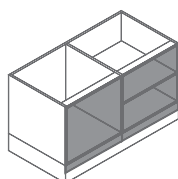


NEW GRAPHITE

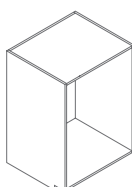
**What's included:** AVAILABLE WITH/WITHOUT 6MM LINE GROOVES



**AC7002D**  
700mm  
2 Door Module  
+ Door + Kicker



**AC9502DBQ**  
950mm  
2 Door BBQ Module  
+ Door + Kicker



**AC660DWF**  
660mm  
Fridge Frame Unit

## STEP 3

### CHOOSE STONE COLOUR

#### YOUR CHOICE OF STONE BENCHTOPS

Choose from our crafted selection of quality stone colours to suit your cabinetry.



SPARKLING BLACK



SPARKLING WHITE



SPARKLING GREY



SPARKLING CINNAMON

**What's included:**



**745**  
20mm  
Stone Top



**255 x 2**  
20mm  
BBQ Sides



**950**  
20mm  
BBQ Base



**705**  
20mm  
Stone Top

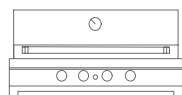


**930 x 2**  
20mm  
Stone Waterfall Ends

## STEP 4

### CONFIRM YOUR APPLIANCES

#### CHECK YOUR APPLIANCES



**EAL900RBQ**  
4 Burner Hooded BBQ



**EA60WFSX2L**  
OR **EA60WFSX2R**  
138lt Single Door  
Beverage Cooler

EA60WFSX2L (Left Hinge) | EA60WFSX2R (Right Hinge)

## STEP 5

### SELECT YOUR DELIVERY OPTION



PICKUP



HOME DELIVERY\*



HOME DELIVERY + ASSEMBLY\*

# AMICI

## 2.66 METRES

- + The upgrade from the Piccolo
- + Featuring under mount sink and tap (Code: VO54C)
- + Flat lid BBQ option available
- \* Displayed with optional 1200mm Rangehood



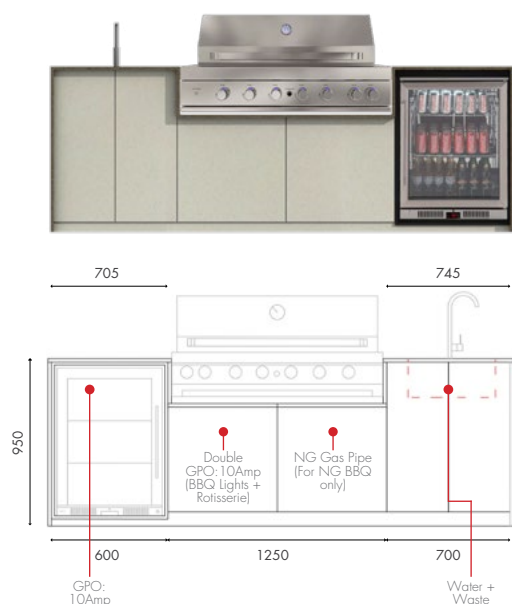
## STEP 1

PLAN,  
MEASURE &  
SELECT

### DESIGN SUITABLE FOR MIRROR IMAGE

### YOUR QUICK CHECKLIST GUIDE

We've provided you with a quick checklist guide so you know to plan and measure your alfresco area and allocate for your service requirements.



### PIZZA OVEN/RANGEHOOD (OPTIONAL EXTRAS)

Love your kitchen but want a Rangehood or Pizza Oven addition? We have a large range of appliances that can make a real difference to the functionality of your new Alfresco kitchen. Check out our entire range and specifications at the back of this catalogue.



## AMICI CHECKLIST

- ☐ Will your kitchen and appliances be undercover or in a weatherproof environment?
- ☐ Check and confirm where your existing or new service point are.
  - ☐ Water + Waste
  - ☐ Electricity points
  - ☐ Plumbing
  - ☐ Gas points
- ☐ Any surrounding permanent fixtures to consider?
  - ☐ Balustrades
  - ☐ Pillars

**NOTE:**  
Ensure the beverage cooler is allocated closest to your internal wall.

**2.66  
METRES**



## STEP 2

### SELECT CABINETRY COLOUR

#### YOUR CHOICE OF COLOURED CABINETRY

Compact Laminex features + on trend colour selections for kitchen doors and kickers.

Laminex®



BLACK



POLAR WHITE



MOOSE



STIPPLE SEAL



PLATINUM MICRO



JERICO



OYSTER LINEA



SEASONED OAK

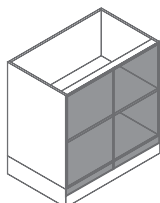


BLACKENED LINEWOOD

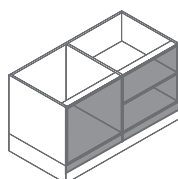


NEW GRAPHITE

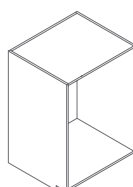
**What's included:** AVAILABLE WITH/WITHOUT 6MM LINE GROOVES



**AC7002D**  
700mm  
2 Door Module  
+ Door + Kicker



**AC12502DBQ**  
950mm  
2 Door BBQ Module  
+ Door + Kicker



**AC660DWF**  
660mm  
Fridge Frame Unit

## STEP 3

### CHOOSE STONE COLOUR

#### YOUR CHOICE OF STONE BENCHTOPS

Choose from our crafted selection of quality stone colours to suit your cabinetry.



SPARKLING BLACK



SPARKLING WHITE

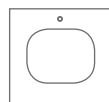


SPARKLING GREY



SPARKLING CINNAMON

**What's included:**



**745-S**  
20mm  
Stone Top with Sink  
and Tap Cutout



**255 x 2 + 625 x 2**  
20mm  
BBQ Base & BBQ Sides



**705**  
20mm  
Stone Top

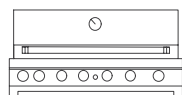


**930 x 2**  
20mm  
Stone Waterfall Ends

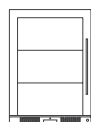
## STEP 4

### CONFIRM YOUR APPLIANCES

#### CHECK YOUR APPLIANCES



**EAL1200RBQ**  
6 Burner Hooded  
BBQ + Rotisserie



**EA60WFSX2L**  
OR **EA60WFSX2R**  
138lt Single Door  
Beverage Cooler



**EA5510UM**  
Under/Top Mount  
Single Bowl Sink



**VO54C**  
Sink Mixer

EA60WFSX2L (Left Hinge) | EA60WFSX2R (Right Hinge)

## STEP 5

### SELECT YOUR DELIVERY OPTION

#### CONFIRM YOUR DELIVERY INSTRUCTIONS



PICKUP



HOME DELIVERY\*



HOME DELIVERY + ASSEMBLY\*

# VIVA

## 3.52 METRES

- + Upgrade from the Amici
- + Featuring addition of a domino cooktop - either a Wok Burner/Electric BBQ/Deep Fryer/Tepenyaki
- + Flat lid BBQ available
- \* Displayed with optional 1200mm Rangehood



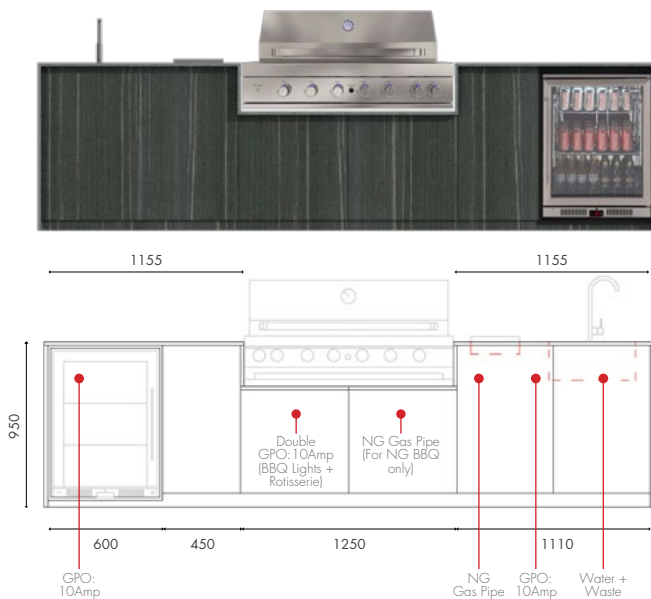
## STEP 1

PLAN,  
MEASURE &  
SELECT

### DESIGN SUITABLE FOR MIRROR IMAGE

### YOUR QUICK CHECKLIST GUIDE

We've provided you with a quick checklist guide so you know to plan and measure your alfresco area and allocate for your service requirements.



### PIZZA OVEN/RANGEHOOD (OPTIONAL EXTRAS)

Love your kitchen but want a Rangehood or Pizza Oven addition? We have a large range of appliances that can make a real difference to the functionality of your new Alfresco kitchen. Check out our entire range and specifications at the back of this catalogue.



## VIVA CHECKLIST

**3.52  
METRES**

- ☐ Will your kitchen and appliances be undercover or in a weatherproof environment?
- ☐ Check and confirm where your existing or new service point are.
  - ☐ Water + Waste
  - ☐ Electricity points
  - ☐ Plumbing
  - ☐ Gas points
- ☐ Any surrounding permanent fixtures to consider?
  - ☐ Balustrades
  - ☐ Pillars

**NOTE:**  
Ensure the beverage cooler is allocated closest to your internal wall.



## STEP 2

### SELECT CABINETRY COLOUR

#### YOUR CHOICE OF COLOURED CABINETRY

Compact laminate features + on trend colour selections for kitchen doors and kickers.

Laminex®



BLACK



POLAR WHITE



MOOSE



STIPPLE SEAL



PLATINUM MICRO



JERICO



OYSTER LINEA



SEASONED OAK

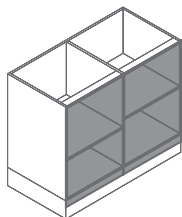


BLACKENED LINEWOOD

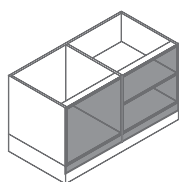


NEW GRAPHITE

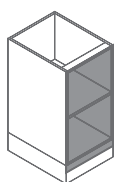
**What's included:** AVAILABLE WITH/WITHOUT 6MM LINE GROOVES



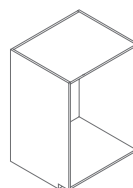
**AC11102D**  
1110mm  
2 Door Module  
+ Door + Kicker



**AC12502DBQ**  
1250mm  
2 Door BBQ Module  
+ Door + Kicker



**AC4501D**  
450mm  
1 Door Module  
+ Door + Kicker



**AC660DWF**  
660mm  
Fridge Frame Unit

## STEP 3

### CHOOSE STONE COLOUR

#### YOUR CHOICE OF STONE BENCHTOPS

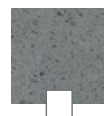
Choose from our crafted selection of quality stone colours to suit your cabinetry.



SPARKLING BLACK



SPARKLING WHITE

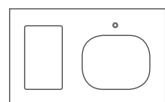


SPARKLING GREY



SPARKLING CINNAMON

**What's included:**



**1155-DS**  
20mm  
Stone Top with  
Sink, Tap and  
Wok Cutout



**255 x 2 + 625 x 2**  
20mm  
BBQ Base  
& BBQ Sides



**1155**  
20mm  
Stone Top

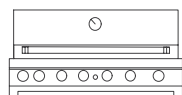


**930 x 2**  
20mm  
Stone Waterfall Ends

## STEP 4

### CONFIRM YOUR APPLIANCES

#### CHECK YOUR APPLIANCES



**EAL1200RBQ**  
6 Burner Hooded  
BBQ + Rotisserie



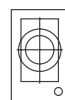
**EA60WFSX2L**  
OR **EA60WFSX2R**  
138lt Single Door  
Beverage Cooler



**EAS510UM**  
Under/Top Mount  
Single Bowl Sink



**VO54C**  
Sink Mixer



**EMJG30WSX**  
30cm Gas Wok  
Burner 18mj

EA60WFSX2L (Left Hinge) | EA60WFSX2R (Right Hinge)

## STEP 5

### SELECT YOUR DELIVERY OPTION

#### CONFIRM YOUR DELIVERY INSTRUCTIONS



PICKUP



HOME DELIVERY\*



HOME DELIVERY + ASSEMBLY\*

# FRESCA

**4.19**  
METRES

- + A unique fully enclosed Alfresco option where a BBQ is not required
- + 4 seasonal alfresco offerings with a Electric BBQ/Tepenyaki Plate/Wok Burner/Deep Fryer
- + Dishwasher included
- \* Displayed with optional 1200mm Rangehood



## STEP 1

PLAN,  
MEASURE &  
SELECT

### DESIGN SUITABLE FOR MIRROR IMAGE

### YOUR QUICK CHECKLIST GUIDE

We've provided you with a quick checklist guide so you know to plan and measure your alfresco area and allocate for your service requirements.



### PIZZA OVEN/RANGEHOOD (OPTIONAL EXTRAS)

Love your kitchen but want a Rangehood or Pizza Oven addition? We have a large range of appliances that can make a real difference to the functionality of your new Alfresco kitchen. Check out our entire range and specifications at the back of this catalogue.



## FRESCA CHECKLIST

**4.19**  
METRES

- ☐ Will your kitchen and appliances be undercover or in a weatherproof environment?
- ☐ Check and confirm where your existing or new service point are.
  - ☐ Water + Waste
  - ☐ Electricity points
  - ☐ Plumbing
  - ☐ Gas points
- ☐ Any surrounding permanent fixtures to consider?
  - ☐ Balustrades
  - ☐ Pillars

**NOTE:**  
Ensure the beverage cooler is allocated closest to your internal wall.



## STEP 2

### SELECT CABINETRY COLOUR

#### YOUR CHOICE OF COLOURED CABINETRY

Compact laminate features + on trend colour selections for kitchen doors and kickers.

Laminex®



BLACK



POLAR WHITE



MOOSE



STIPPLE SEAL



PLATINUM MICRO



JERICO



OYSTER LINEA



SEASONED OAK

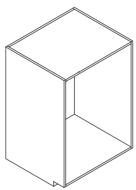


BLACKENED LINEWOOD

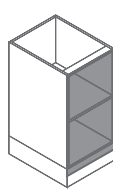


NEW GRAPHITE

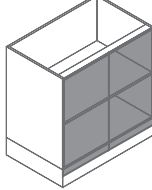
**What's included:** AVAILABLE WITH/WITHOUT 6MM LINE GROOVES



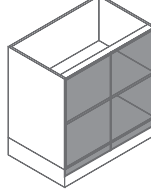
**AC660DWF**  
660mm  
Fridge Frame Unit



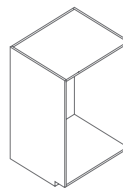
**AC4501D**  
450mm  
1 Door Module  
+ Door + Kicker



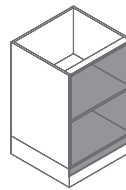
**AC9002DD**  
900mm  
1 Door Module  
+ Door + Kicker



**AC9002DD**  
900mm  
1 Door Module  
+ Door + Kicker



**AC635DW**  
635mm  
Fridge Frame Unit



**AC6001D**  
600mm  
1 Door Module  
+ Door + Kicker

## STEP 3

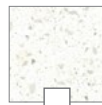
### CHOOSE STONE COLOUR

#### YOUR CHOICE OF STONE BENCHTOPS

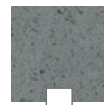
Choose from our crafted selection of quality stone colours to suit your cabinetry.



SPARKLING BLACK



SPARKLING WHITE



SPARKLING GREY

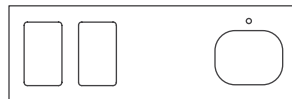


SPARKLING CINNAMON

**What's included:**



**2045**  
20mm  
Stone Top



**2145**  
20mm  
Stone Top

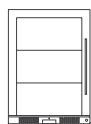


**930 x 2**  
20mm  
Stone Waterfall Ends

## STEP 4

### CONFIRM YOUR APPLIANCES

#### CHECK YOUR APPLIANCES



**EA60WFSX2L**  
OR **EA60WFSX2R**  
138lt Single Door  
Beverage Cooler



**EA5510UM**  
Under/Top Mount  
Single Bowl Sink



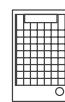
**VO54C**  
Sink Mixer



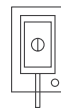
**EMJG30WSX**  
30cm Gas Wok  
Burner 18mj



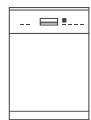
**EMJTE30SX**  
30cm Electric  
Teppanyaki Plate



**EMJB30SX**  
30cm Electric  
BBQ



**EMJFR30SX**  
30cm Electric  
Deep Fryer



**EDS14PXS**  
60cm Freestanding  
Dishwasher

EA60WFSX2L (Left Hinge) | EA60WFSX2R (Right Hinge)

## STEP 5

### SELECT YOUR DELIVERY OPTION



PICKUP



HOME DELIVERY\*



HOME DELIVERY + ASSEMBLY\*

# SERATA

4.79  
METRES

- + Upgrade from the Fresco
- + Inclusion of the BBQ with additional Wok Burner and Deep Fryer
- \* Displayed with optional 1200mm Rangehood



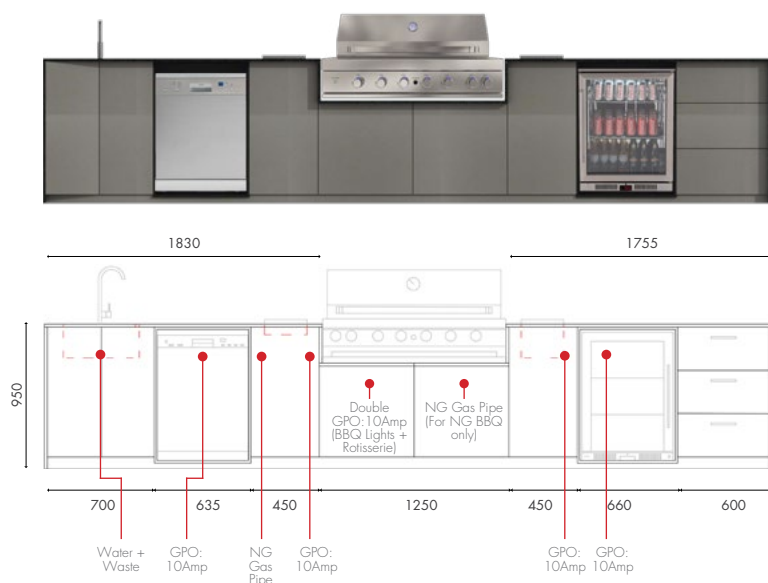
## STEP 1

PLAN,  
MEASURE &  
SELECT

### DESIGN SUITABLE FOR MIRROR IMAGE

### YOUR QUICK CHECKLIST GUIDE

We've provided you with a quick checklist guide so you know to plan and measure your alfresco area and allocate for your service requirements.



### PIZZA OVEN/RANGEHOOD (OPTIONAL EXTRAS)

Love your kitchen but want a Rangehood or Pizza Oven addition? We have a large range of appliances that can make a real difference to the functionality of your new Alfresco kitchen. Check out our entire range and specifications at the back of this catalogue.



## SERATA CHECKLIST

- ☐ Will your kitchen and appliances be undercover or in a weatherproof environment?
- ☐ Check and confirm where your existing or new service point are.
  - ☐ Water + Waste
  - ☐ Electricity points
  - ☐ Plumbing
  - ☐ Gas points
- ☐ Any surrounding permanent fixtures to consider?
  - ☐ Balustrades
  - ☐ Pillars

**NOTE:**  
Ensure the beverage cooler is allocated closest to your internal wall.

4.79  
METRES



## STEP 2

### SELECT CABINETRY COLOUR

#### YOUR CHOICE OF COLOURED CABINETRY

Compact laminate features + on trend colour selections for kitchen doors and kickers.

Laminex®



BLACK



POLAR WHITE



MOOSE



STIPPLE SEAL



PLATINUM MICRO



JERICO



OYSTER LINEA



SEASONED OAK

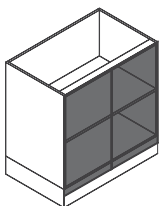


BLACKENED LINEWOOD

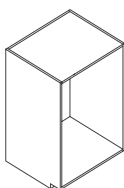


NEW GRAPHITE

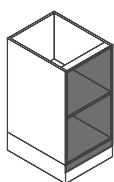
**What's included:** AVAILABLE WITH/WITHOUT 6MM LINE GROOVES



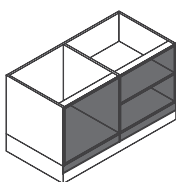
**AC7002D**  
700mm  
2 Door Module  
+ Door + Kicker



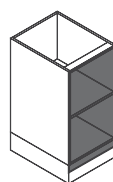
**AC635DW**  
635mm  
Dishwasher Unit



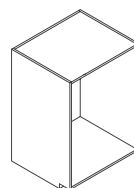
**AC4501D**  
450mm  
1 Door Module  
+ Door + Kicker



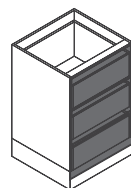
**AC12502DBQ**  
950mm  
2 Door BBQ Module  
+ Door + Kicker



**AC4501D**  
450mm  
1 Door Module  
+ Door + Kicker



**AC660DWF**  
660mm  
Fridge Frame Unit



**AC600DW3DM**  
660mm  
3 Draw Module

## STEP 3

### CHOOSE STONE COLOUR

#### YOUR CHOICE OF STONE BENCHTOPS

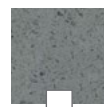
Choose from our crafted selection of quality stone colours to suit your cabinetry.



SPARKLING BLACK



SPARKLING WHITE



SPARKLING GREY



SPARKLING CINNAMON

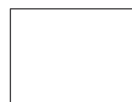
**What's included:**



**1830**  
20mm  
Stone Top



**1755**  
20mm  
Stone Top



**930 x 2**  
20mm  
Stone Waterfall Ends

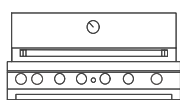


**255 x 2 + 625 x 2**  
20mm  
BBQ Base & BBQ Sides

## STEP 4

### CONFIRM YOUR APPLIANCES

#### CHECK YOUR APPLIANCES



**EAL1200RBQ**  
6 Burner Hooded  
BBQ + Rotisserie



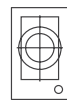
**EA60WFSX2L**  
OR **EA60WFSX2R**  
138lt Single Door  
Beverage Cooler



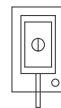
**EAS510UM**  
Under/Top Mount  
Single Bowl Sink



**V054C**  
Sink Mixer



**EMJG30WSX**  
30cm Gas Wok  
Burner 18mj



**EMJFR30SX**  
30cm Electric  
Deep Fryer



**EDS14PXS**  
60cm Freestanding  
Dishwasher

EA60WFSX2L (Left Hinge) | EA60WFSX2R (Right Hinge)

## STEP 5

### SELECT YOUR DELIVERY OPTION



PICKUP



HOME DELIVERY\*



HOME DELIVERY + ASSEMBLY\*

# LA MODA

**5.09**  
METRES

- + Upgrade from the Serata
- + Addition of oven and double beverage cooler
- \* Displayed with optional 1200mm Rangehood



## STEP 1

PLAN,  
MEASURE &  
SELECT

### DESIGN SUITABLE FOR MIRROR IMAGE

### YOUR QUICK CHECKLIST GUIDE

We've provided you with a quick checklist guide so you know to plan and measure your alfresco area and allocate for your service requirements.



### PIZZA OVEN/RANGEHOOD (OPTIONAL EXTRAS)

Love your kitchen but want a Rangehood or Pizza Oven addition? We have a large range of appliances that can make a real difference to the functionality of your new Alfresco kitchen. Check out our entire range and specifications at the back of this catalogue.



## LA MODA CHECKLIST

- ☐ Will your kitchen and appliances be undercover or in a weatherproof environment?
- ☐ Check and confirm where your existing or new service point are.
  - ☐ Water + Waste
  - ☐ Electricity points
  - ☐ Plumbing
  - ☐ Gas points
- ☐ Any surrounding permanent fixtures to consider?
  - ☐ Balustrades
  - ☐ Pillars

**NOTE:**  
Ensure the beverage cooler is allocated closest to your internal wall.

**5.09**  
METRES



## STEP 2

### SELECT CABINETRY COLOUR

#### YOUR CHOICE OF COLOURED CABINETRY

Compact laminate features + on trend colour selections for kitchen doors and kickers.

Laminex®



BLACK



POLAR WHITE



MOOSE



STIPPLE SEAL



PLATINUM MICRO



JERICO



OYSTER LINEA



SEASONED OAK

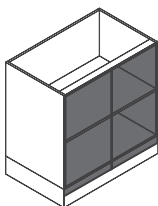


BLACKENED LINEWOOD

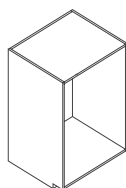


NEW GRAPHITE

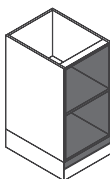
**What's included:** AVAILABLE WITH/WITHOUT 6MM LINE GROOVES



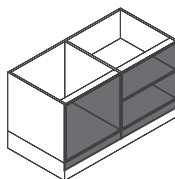
**AC7002D**  
700mm  
2 Door Module  
+ Door + Kicker



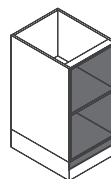
**AC635DW**  
635mm  
Dishwasher Unit



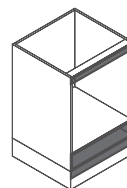
**AC4501D**  
450mm  
1 Door Module  
+ Door + Kicker



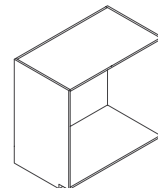
**AC12502DBQ**  
950mm  
2 Door BBQ Module  
+ Door + Kicker



**AC4501D**  
450mm  
1 Door Module  
+ Door + Kicker



**AC600WOC**  
600mm  
Wall Oven Cavity  
+ Infill + Kicker



**AC960DWF**  
960mm  
Fridge Frame Unit

## STEP 3

### CHOOSE STONE COLOUR

#### YOUR CHOICE OF STONE BENCHTOPS

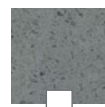
Choose from our crafted selection of quality stone colours to suit your cabinetry.



SPARKLING BLACK



SPARKLING WHITE



SPARKLING GREY



SPARKLING CINNAMON

**What's included:**



**1830**  
20mm  
Stone Top



**2035**  
20mm  
Stone Top



**930 x 2**  
20mm  
Stone Waterfall Ends

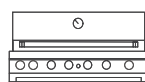


**255 x 2 + 625 x 2**  
20mm  
Stone Top  
& BBQ Sides

## STEP 4

### CONFIRM YOUR APPLIANCES

#### CHECK YOUR APPLIANCES



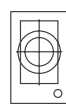
**EAL1200RBQ**  
6 Burner Hooded  
BBQ + Rotisserie



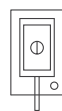
**EAS510UM**  
Under/Top  
Mount  
Single Bowl Sink



**VO54C**  
Sink Mixer



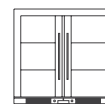
**EMJG30WSX**  
30cm Gas Wok  
Burner 18mj



**EMJG30WSX**  
30cm Electric  
Deep Fryer



**EDS14PXS**  
60cm  
Freestanding  
Dishwasher



**EA900WFSX2**  
208lt Double Door  
Beverage Cooler



**EV608SX**  
60cm Electric  
Multifunction  
Oven

## STEP 5

### SELECT YOUR DELIVERY OPTION



PICKUP



HOME DELIVERY\*



HOME DELIVERY + ASSEMBLY\*



#### AUSTRALIAN OWNED + OPERATED

Euro Appliances and the Eurostyle Group, is an Australian owned and operated company, represented as a cultural mosaic accentuating the European flair and flavour known to all. As the years have progressed, the Euro brand has continually evolved becoming a household name within the appliance industry.



#### OUR TWO-YEAR WARRANTY

All of our appliances are covered by a two-year full part and labour warranty. We attempt to ensure that each customer is treated with the utmost respect if any issues arise with any product.



#### PRONTO - AT YOUR SERVICE!

Our passion is being at your service. At Euro Appliances, we aim to provide a high standard of customer assistance at all times. We intend to provide our customers with quality service upholding our core value of the "Euro peace of mind." Based in Australia, our friendly service team will assist you with any information or queries regarding our products. With over four hundred experienced sales experts nationally, we aim to provide you the service we all expect!

Pronto Service + Support:

**1800 440 335**

**euro**

Email: [info@euroappliances.com.au](mailto:info@euroappliances.com.au)

Head Office: (08) 8165 1012

[www.euroappliances.com.au](http://www.euroappliances.com.au)



**AKTIVO®**  
CLEANSERIOUSLY



#### PROTECT THE ART OF YOUR APPLIANCES.

At Euro, each instrument is designed carefully resembling pieces of delicate art. Every piece of functional art needs love and care, for it to be a focal point within any household.

Our Australian Made cleaning products are designed specifically to lengthen the lifespan of your appliances while eradicating the undesirable ascent generated from your machines. Our products also provide an ultra-sparkling clean for cooktops while possessing a pleasant odour throughout any household or outdoor space.

#### WE RECOMMEND EURO ALFRESCO CLEANING PACK.

We recommend the Euro Alfresco Cleaning Pack to protect the art piece that is your outdoor kitchen. Your Alfresco Cleaning Pack contains the following:

- + Easy Off Oven + BBQ Cleaner - 750 ml
- + Fridge Cleaner + Deodoriser - 750 ml
- + Stainless Steel Cooktop Cleaner - 250 ml
- + Stainless Steel Polish - 250 ml



To clean and protect your Euro Alfresco Kitchen, check out:

[WWW.AKTIVO.COM.AU](http://WWW.AKTIVO.COM.AU)